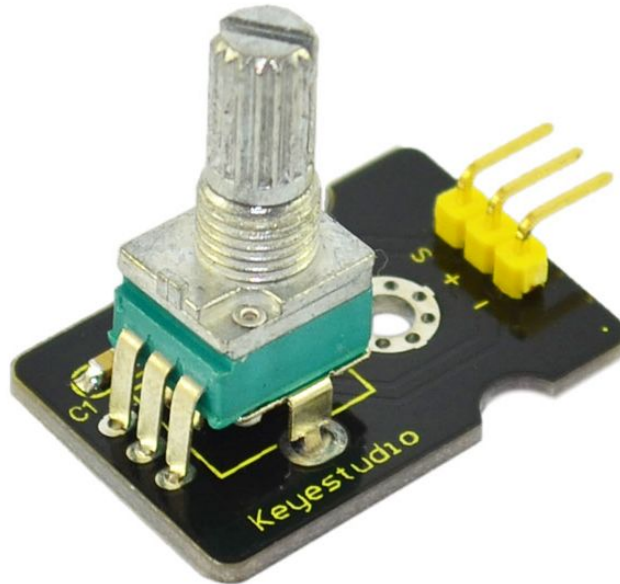


keystudio

Analog Rotation Sensor



Introduction

This analog Rotation Sensor is arduino compatible. It is based on a potentiometer. Its voltage can be subdivided into 1024, easy to be connected to Arduino with our sensor shield. Combined with other sensors, we can make interesting projects by reading the analog value from the IO port.

Specification

Supply Voltage: 3.3V to 5V

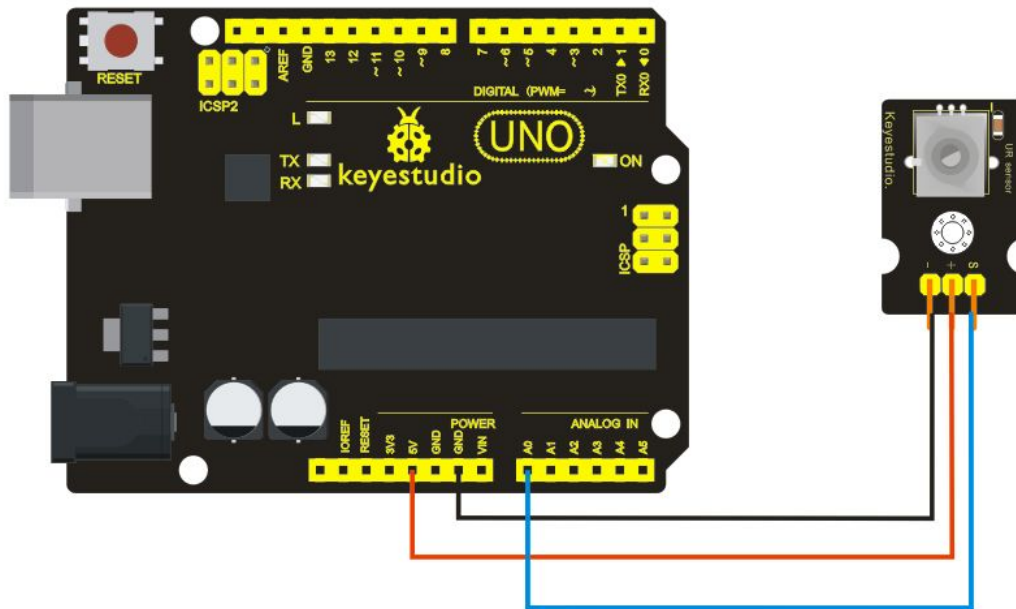
Interface: Analog

Size: 30*20mm

Weight: 8g

Connection Diagram

keystudio



Sample Code

```
///Arduino Sample Code
void setup()
{
  Serial.begin(9600); //Set serial baud rate to 9600 bps
}
void loop()
{
  int val;
  val=analogRead(0); //Read rotation sensor value from analog 0
  Serial.println(val,DEC); //Print the value to serial port
  delay(100);
}
```