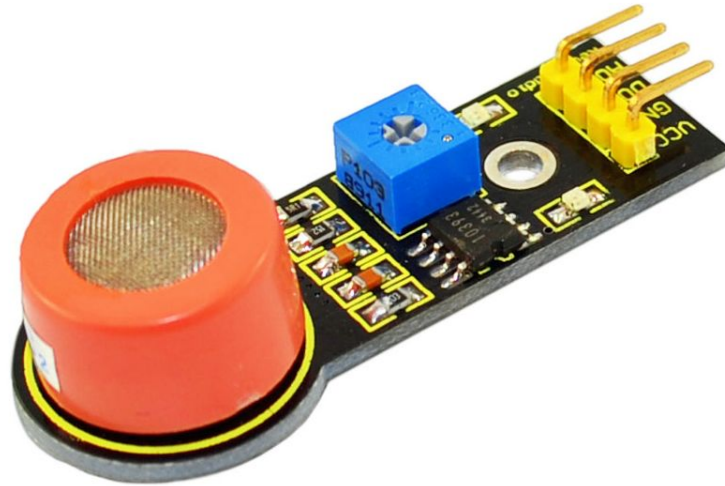


# keyestudio

---

## Analog Alcohol Sensor



### Introduction:

This analog gas sensor - MQ3 is suitable for detecting alcohol. It can be used in a Breath analyzer. It has good selectivity because it has higher sensitivity to alcohol and lower sensitivity to Benzine. The sensitivity can be adjusted by A potentiometer.

### Specification:

Power supply: 5V

Interface type: Analog

Quick response and High sensitivity

Simple drive circuit

Stable and long service life

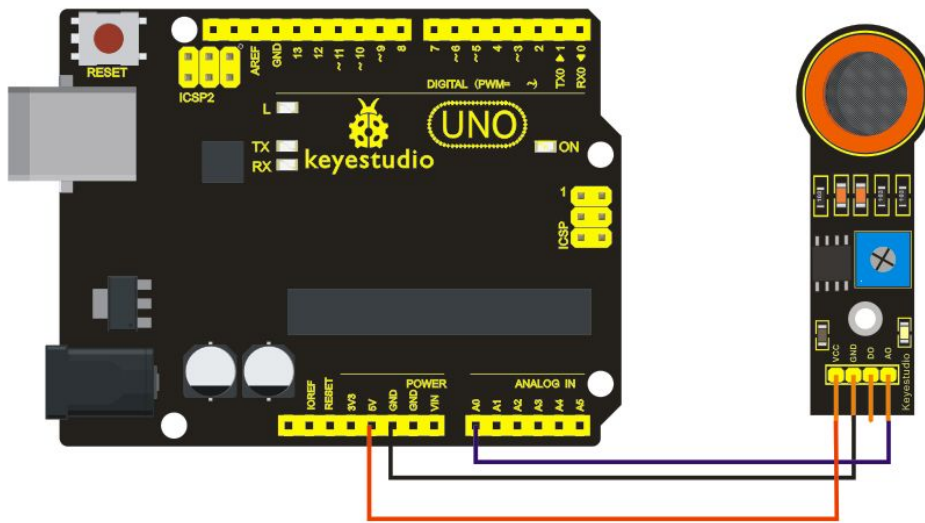
Size: 49.7\*20mm

Weight: 6g

### Connection Diagram:

# keystudio

---



## Sample Code:

```
///Arduino Sample Code
void setup()
{
  Serial.begin(9600); //Set serial baud rate to 9600 bps
}
void loop()
{
  int val;
  val=analogRead(0); //Read Gas value from analog 0
  Serial.println(val,DEC); //Print the value to serial port
  delay(100);
}
```